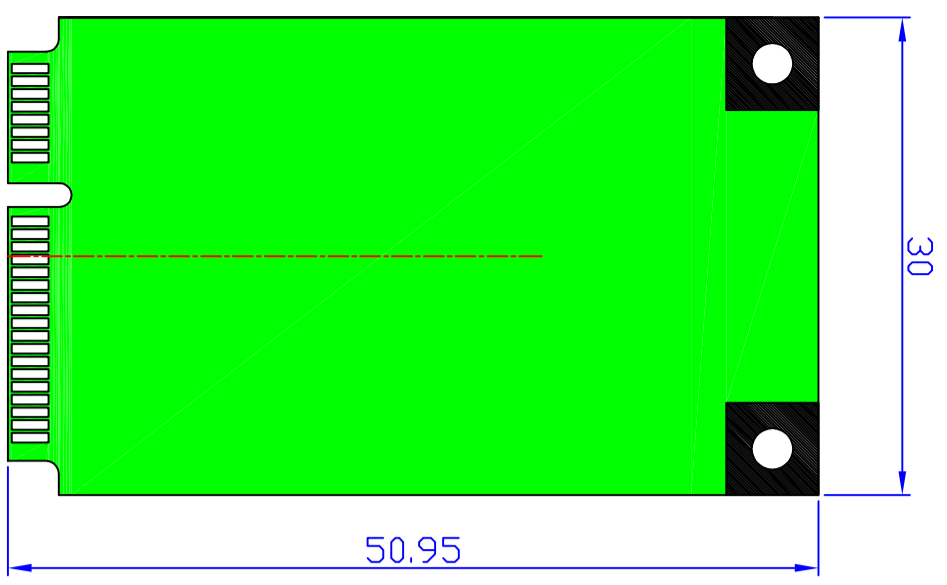
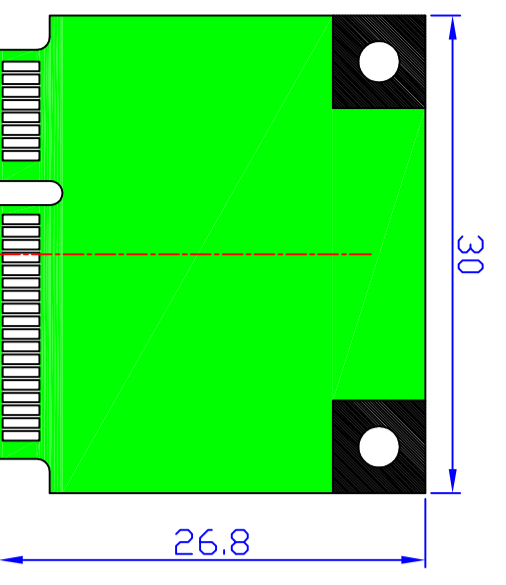
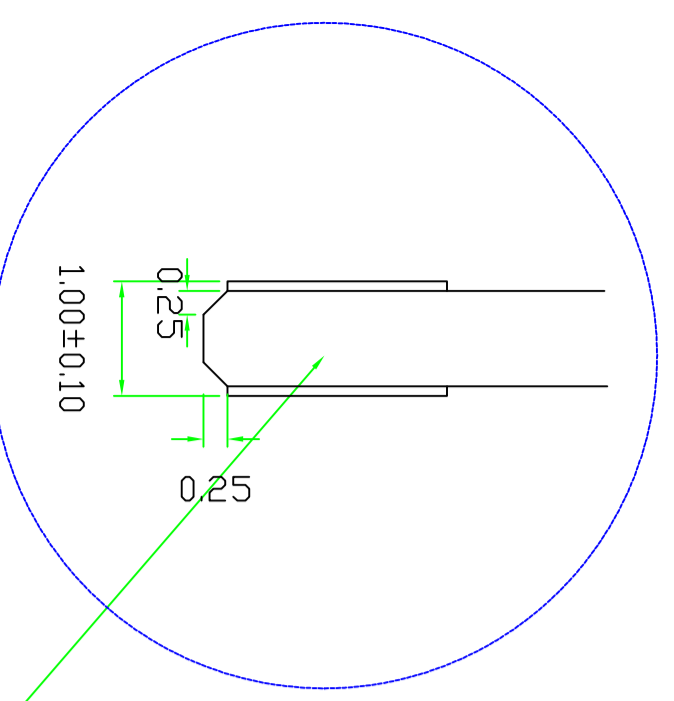


*PCIe card / Mini-card adapter
PCI Express Mini Card Electromechanical Specification Revision 1.2
PCI Express Card Electromechanical Specification 1.1*

FR4 PCB 1.57 ± 0.1mm (1.6mm for PCB vendor)



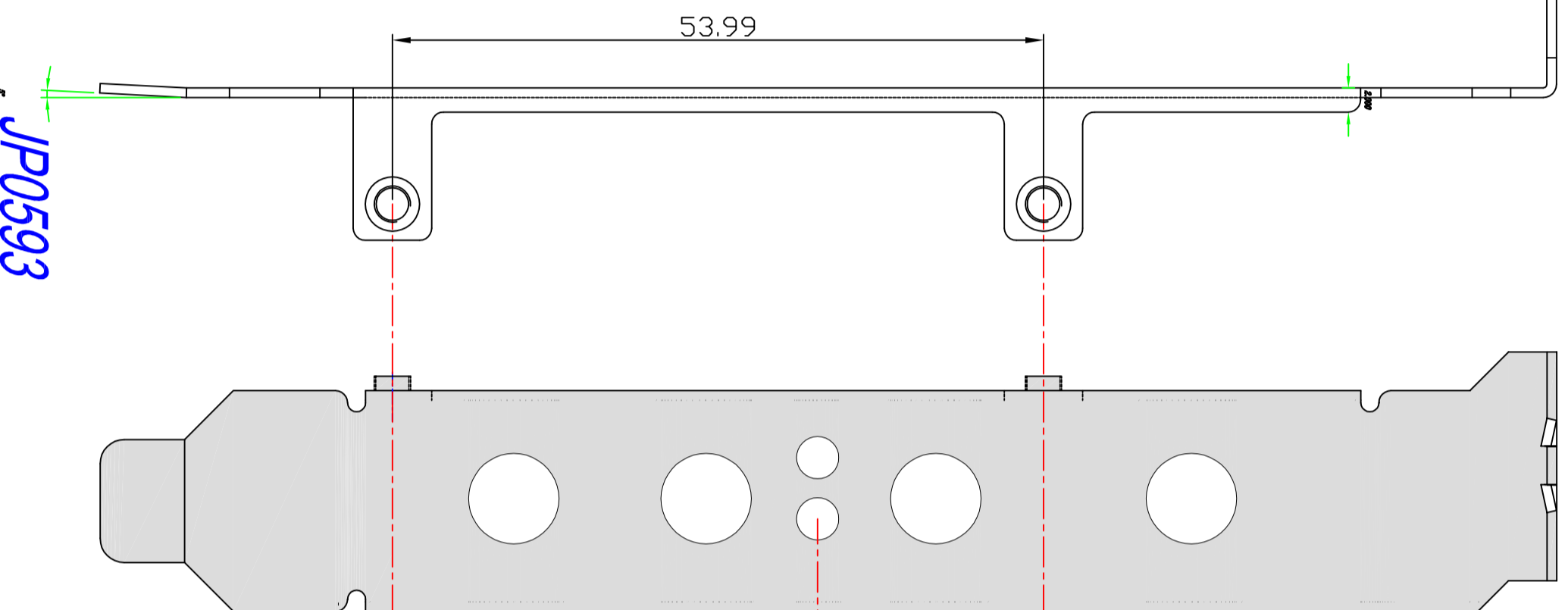
Full-Mini Card dimension



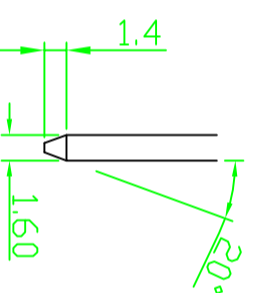
Half-Mini Card dimension



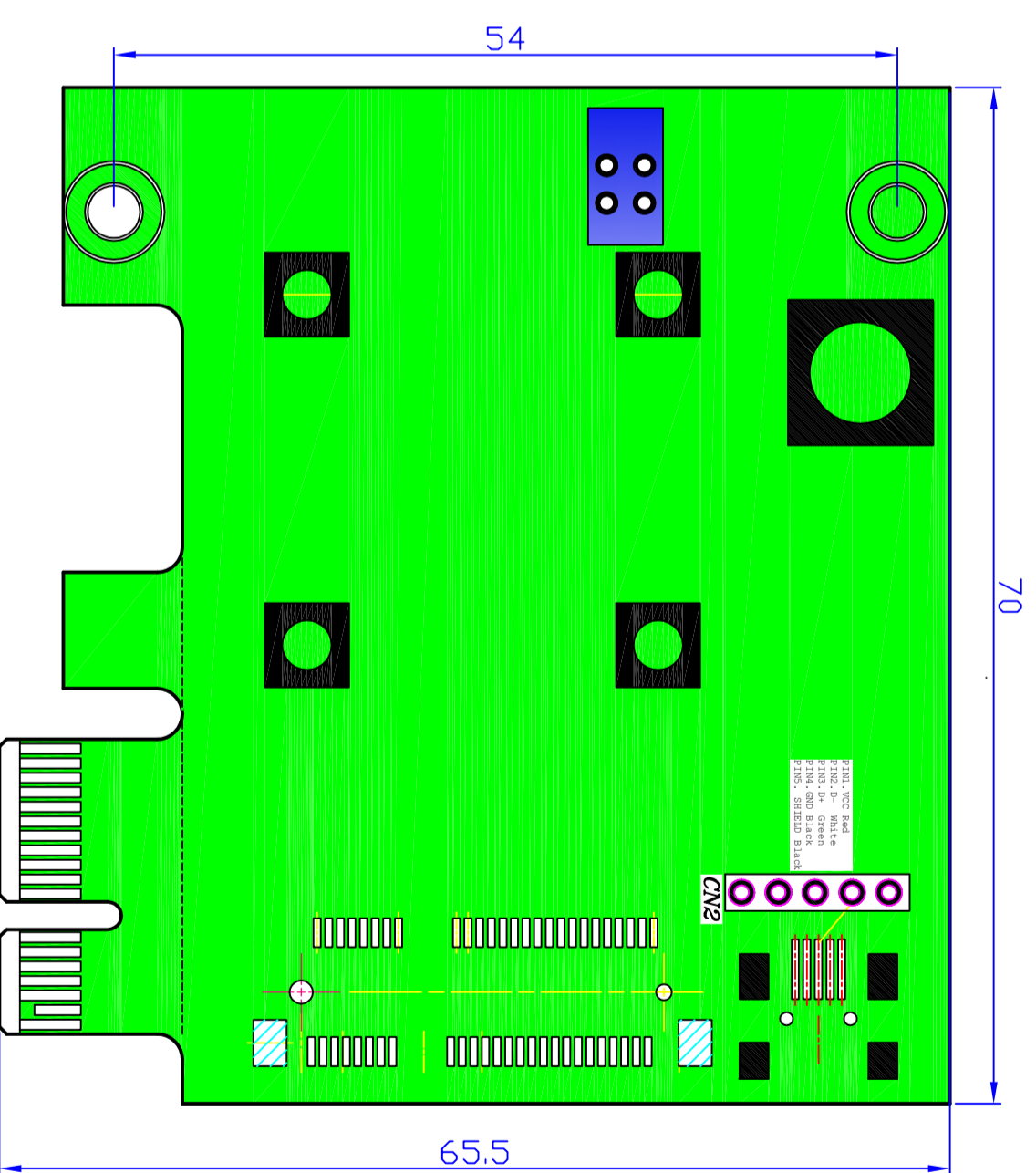
*full-Mini Card
Plank Side*



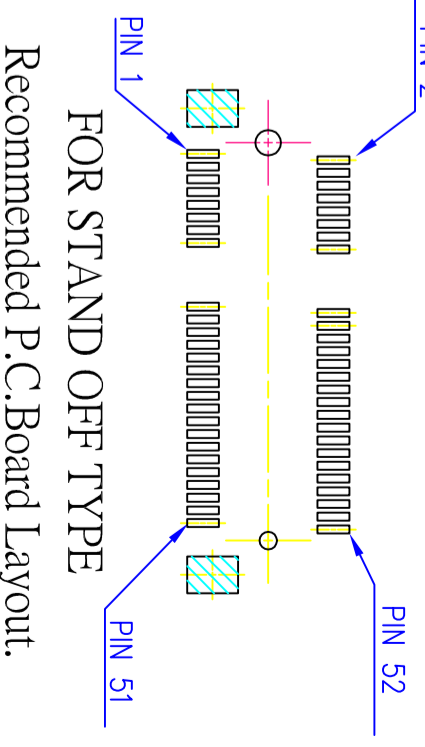
JP0593



No components



*Secondary (Solder) Side
Primary (Component) Side*



APPROVED:	— TOLERANCES —		UNIT:	TITLE :		SHEET
ENGINEER:	General	Angles	mm	Mini Card to PCI-E Adapter		1/1
CHECKED:	30~ ±0.25	0° ±3°	SCALE:	DRAWING NUMBER:		SIZE
DRAWN:	10~30 ±0.20	0.0° ±2°	1:1	G-MP2W-PCBL	Date	A4
	5~10 ±0.15				2009/Mar/17th	REV.
	0~5 ±0.10					A/0
	Gerry Chen					