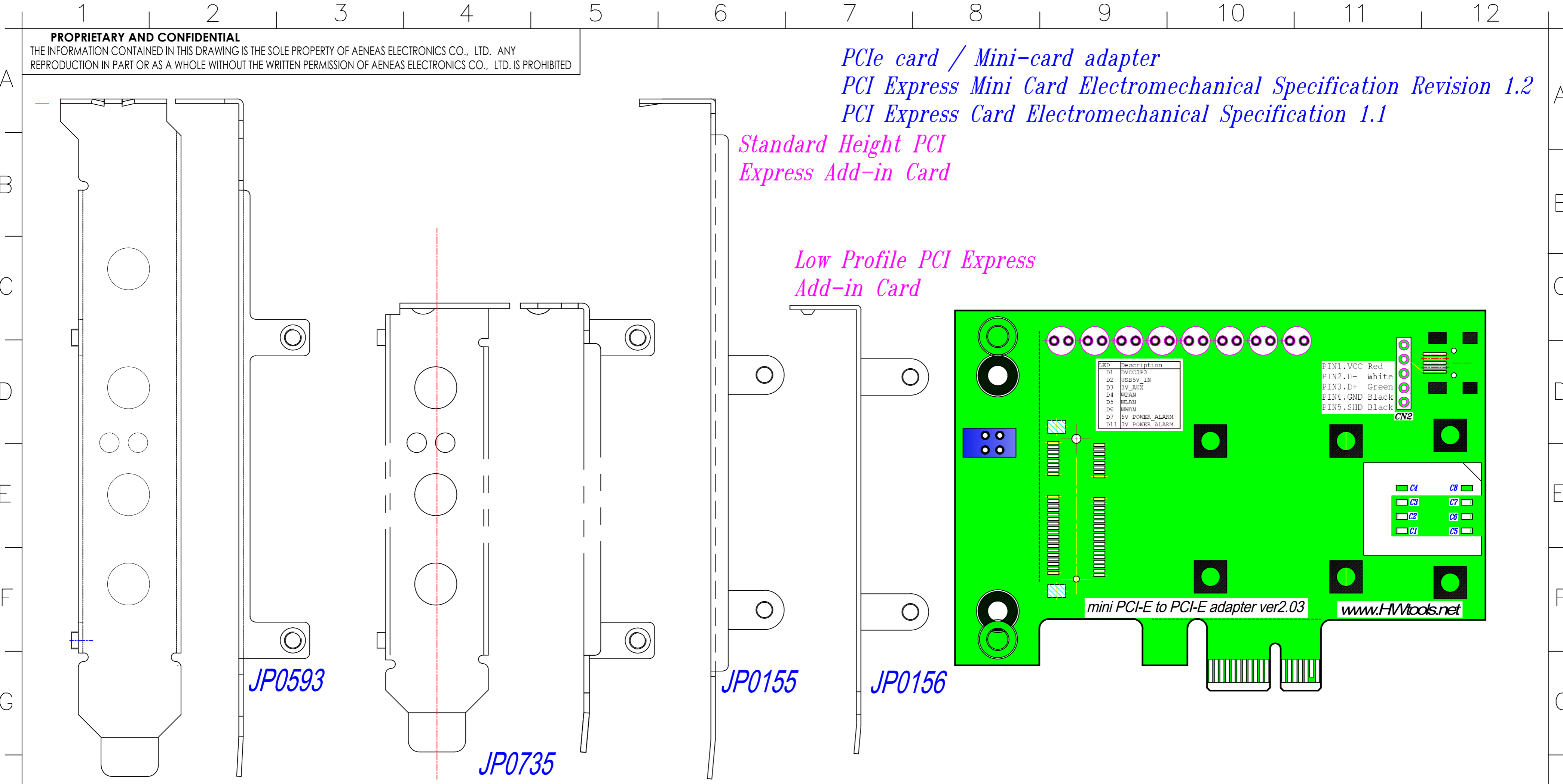


**PROPRIETARY AND CONFIDENTIAL**  
 THE INFORMATION CONTAINED IN THIS DRAWING IS THE SOLE PROPERTY OF AENEAS ELECTRONICS CO., LTD. ANY REPRODUCTION IN PART OR AS A WHOLE WITHOUT THE WRITTEN PERMISSION OF AENEAS ELECTRONICS CO., LTD. IS PROHIBITED

*PCIe card / Mini-card adapter*  
*PCI Express Mini Card Electromechanical Specification Revision 1.2*  
*PCI Express Card Electromechanical Specification 1.1*

*Standard Height PCI Express Add-in Card*

*Low Profile PCI Express Add-in Card*



APPROVED:	- TOLERANCES -		UNIT: mm	TITLE : Mini Card to PCI-E Adapter	SHEET 1/1
ENGINEER:	General	Angles	SCALE: 1:1	DRAWING NUMBER: G-MP2A-PCBL	SIZE A4
CHECKED:	30~ ±0.25	0° ±3°		Date: 2009/Jan/17th	REV. A/0
DRAWN: Gerry Chen	10~30 ±0.20	0.0° ±2°			
	5~10 ±0.15				
	0~5 ±0.10				