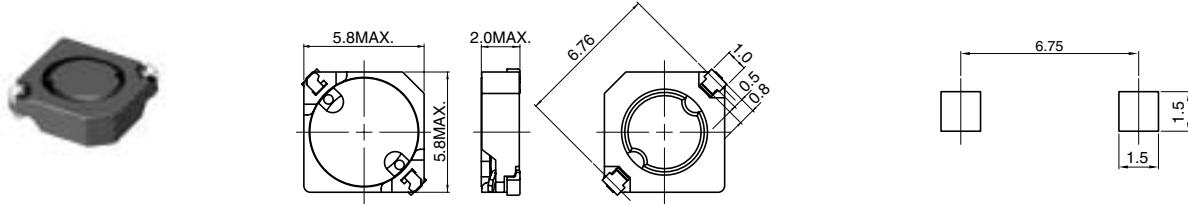


NEW

CDRC5D20

OUTLINE

It is suitable for the power inductor for the EL driver for the small size electric devices and cellular phones.
Achieved high inductance value 6.8mH (Max.) with low DCR.

DIMENSIONS (mm)
LAND PATTERNS (mm)

SPECIFICATIONS

Parts No.	Stamp	Inductance <WITHIN>*1 (at 1kHz)	D.C.R.(mΩ)<MAX.> (at 20°C)*2	Rated Current (mA) *3
CDRC5D20-101	101	100μH±15%	1.32(1.11)	230
CDRC5D20-151	151	150μH±15%	1.69(1.41)	220
CDRC5D20-221	221	220μH±15%	2.04(1.71)	200
CDRC5D20-331	331	330μH±15%	2.65(2.21)	180
CDRC5D20-471	471	470μH±15%	4.1(3.41)	150
CDRC5D20-681	681	680μH±15%	6.9(5.78)	110
CDRC5D20-102	102	1.0mH±15%	8.3(6.98)	105
CDRC5D20-152	152	1.5mH±15%	14.2(11.9)	80
CDRC5D20-222	222	2.2mH±15%	20.8(17.4)	64
CDRC5D20-332	332	3.3mH±15%	27.4(22.9)	55
CDRC5D20-472	472	4.7mH±15%	40.9(34.1)	46
CDRC5D20-682	682	6.8mH±15%	63.5(52.8)	37

*1: Measurement frequency of inductance : at 1kHz

*2: () is typical value.

*3: Rated Current : It indicates the D.C. current value when inductance value become more than 80% of the nominal one, or D.C. current when temperature rise is Δt=40°C (Ta=20°C), whichever is lower.

Sales Contact

North America
1701 Golf Road, Tower 3
Suite 400, Rolling
Meadows, IL 60008, USA
Tel: (1) 847 545-6700
Fax: (1) 847 545-6720

Japan
Nihonbashi- ingyocho
2-Chome, Chuo-ku,
Tokyo, Japan
Tel: (81) 03 3667-3301
Fax: (81) 03 3667-3456

Hong Kong
14/F, Eastern Centre,
1065 King's Road, Quarry
Road, Hong Kong
Tel: (852) 2880-6688
Fax: (852) 2880-9596

Taiwan
No. 171, Futech Street,
Hsin-I, Taipei, Taiwan,
ROC
Tel: (886) 2 2726-2177
Fax: (886) 2 2728-2726

Singapore
996 Bendemeer
Road #04-05 to 06
Singapore 339944
Tel: (65) 2963-3888
Fax: (65) 2963-390

Europe
Chaussee de Tervuren113A,
1160 Brussels
Belgium
Email:
europe.sales@hk.sumida.com